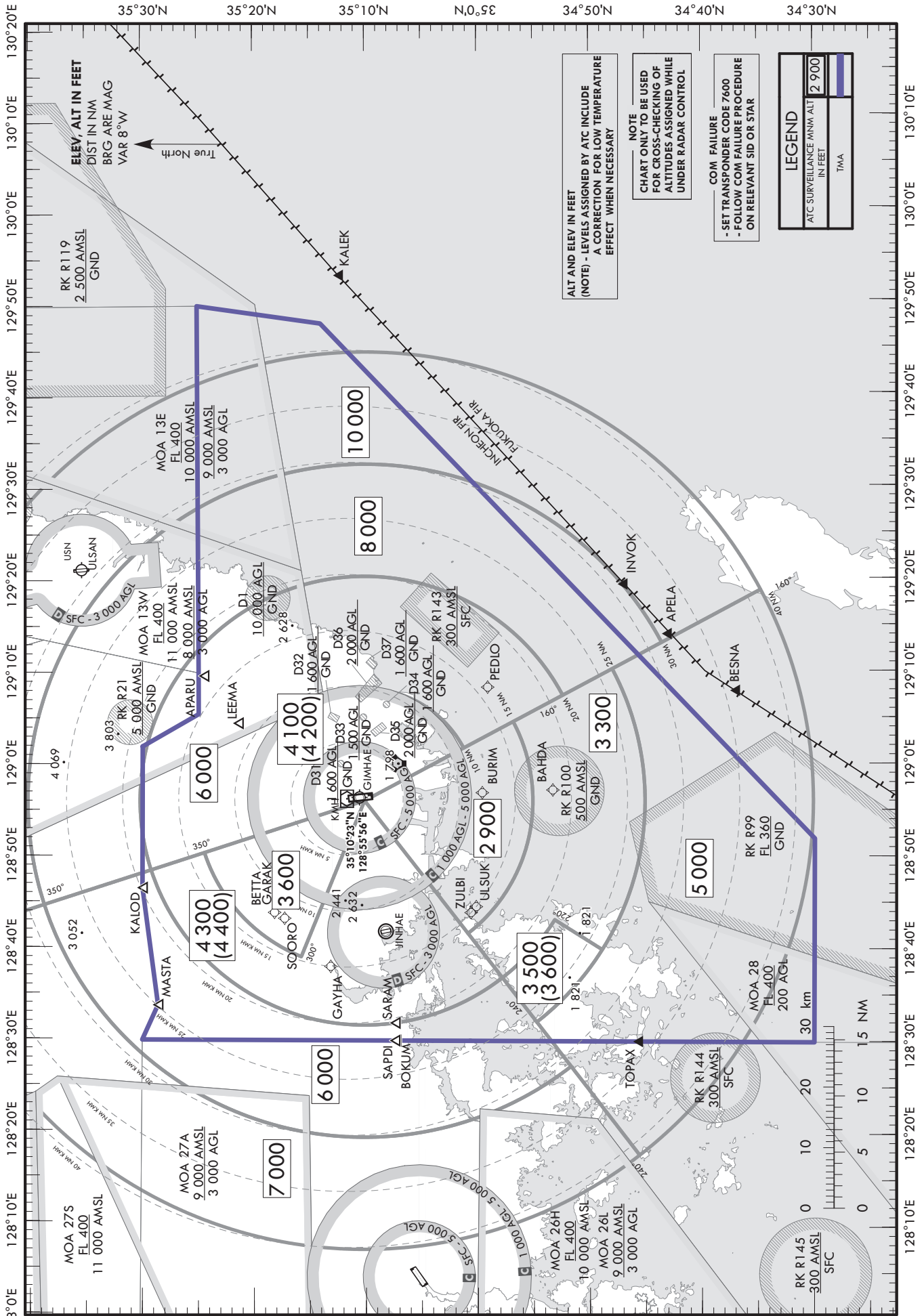


**ATC SURVEILLANCE MINIMUM  
ALTITUDE CHART - ICAO**

AERODROME ELEV 13 ft  
TRANSITION ALT 14 000 ft

APP 135.7 364.0

BUSAN/Gimhae Intl(RKPK)



Change : Establishment of ATC surveillance minimum altitude chart information(350°).

**INTENTIONALLY**

**LEFT**

**BLANK**